

# FOR SALE

## Multi-Family Redevelopment Opportunity



### Property Summary

**Address:** 390, 380, 374, 370, 366, 360, 356 West 1700 South

**Parcel Area:** .90 Acres Total

**Zoning:** CG (Commercial General)

**Asking Price:** \$4,120,000

**Parcel Data:** 15-13-181-012, 15-13-181-003, 15-13-181-004, 15-13-181-005, 15-13-181-006, 15-13-181-007, 15-13-181-008

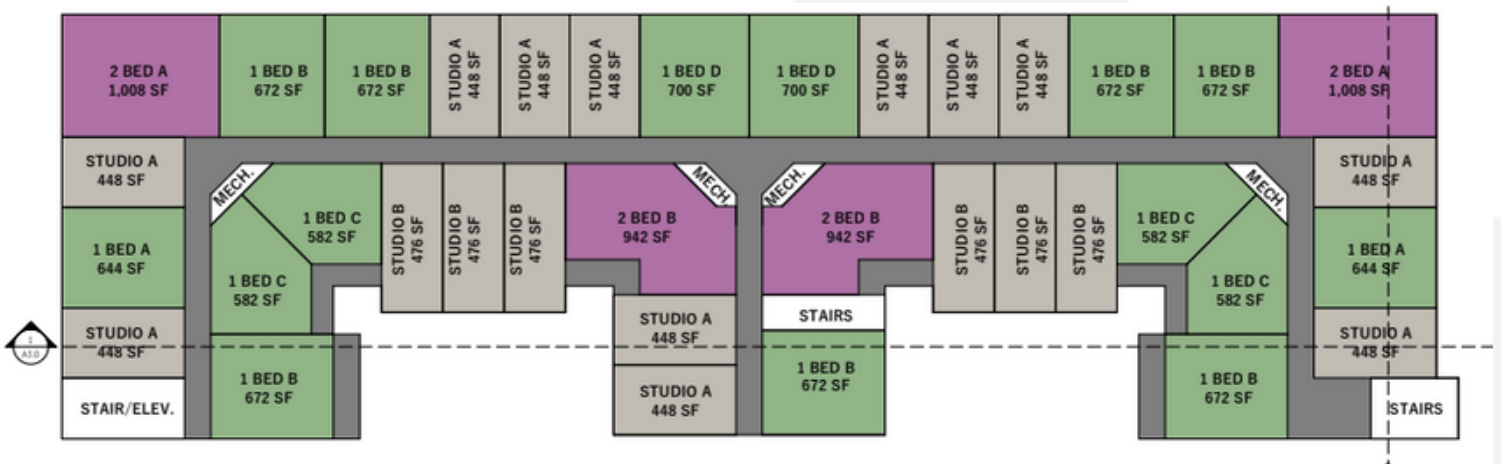


**Jody Jones, CCIM**  
Managing Partner  
801-577-2175  
Jody@AcresUtah.Com



# FOR SALE

390, 380, 374, 370, 366, 360, 356 West 1700 South



**Jody Jones, CCIM**  
 Managing Partner  
 801-577-2175  
 Jody@AcresUtah.Com

**ALIGN**  
 COMPLETE REAL ESTATE SERVICES

1075 Hollywood Avenue  
 Salt Lake City, Utah 84105  
 (801) 214 - 8033  
 acresutah.com

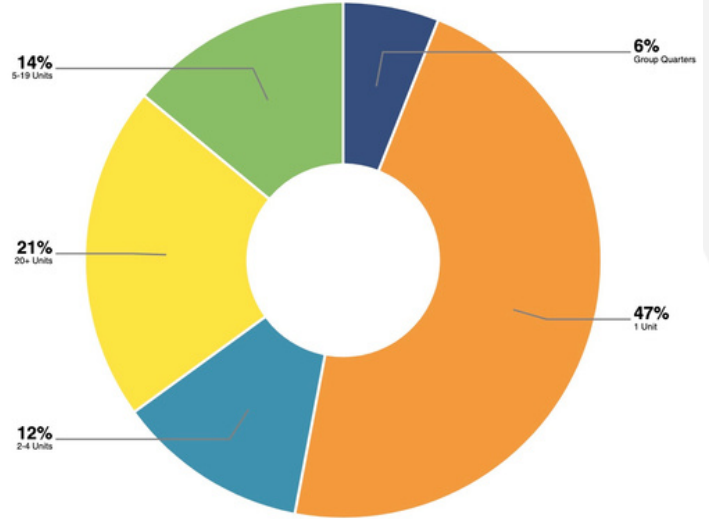
# FOR SALE

390, 380, 374, 370, 366, 360, 356 West 1700 South

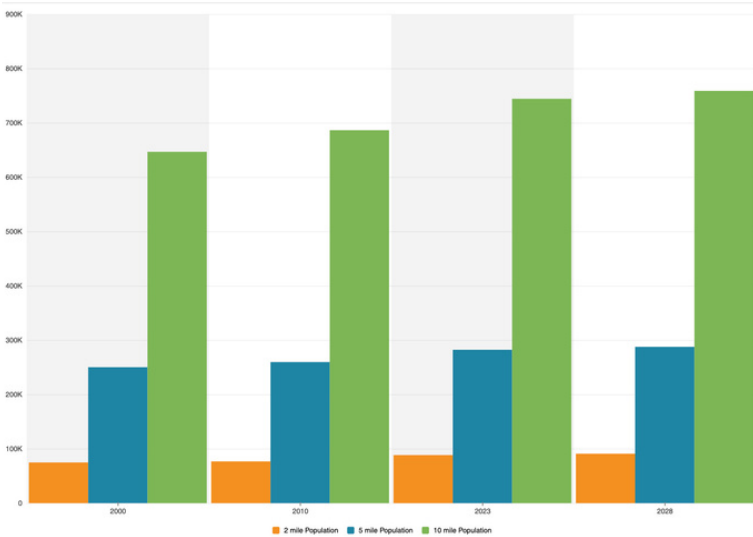
## SURROUNDING SHOPS AND AMENITIES



## AREA HOUSING TYPES



## POPULATION STATISTICS



## WHY UTAH?



Source: Governor's Office of Economic Opportunity, Utah 2021

LISTING BROKER

**Adam D. Von Maack, J.D.**

Managing Partner

801-913-6157

Adam@AcresUtah.Com

**ALIGN**  
COMPLETE REAL ESTATE SERVICES

1075 Hollywood Avenue  
Salt Lake City, Utah 84105  
(801) 214 - 8033  
acresutah.com



